



PICTO Benelux

<http://www.picto.info/>

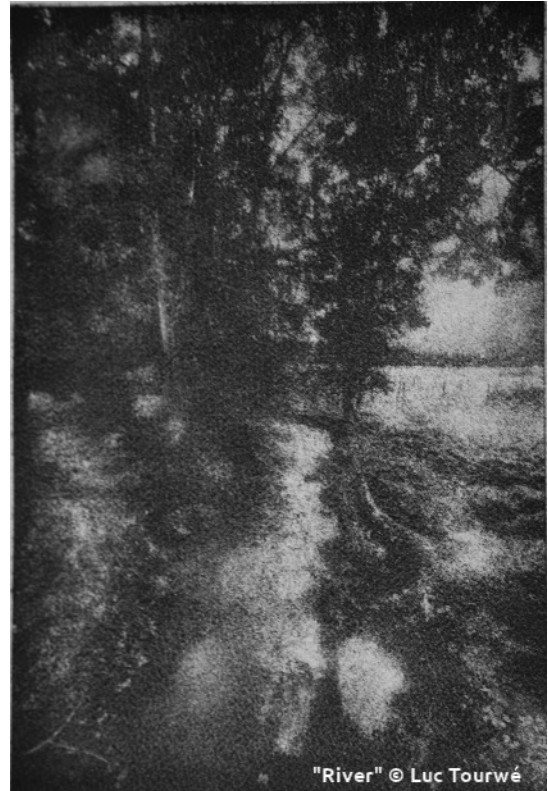


GUMOIL : new tests

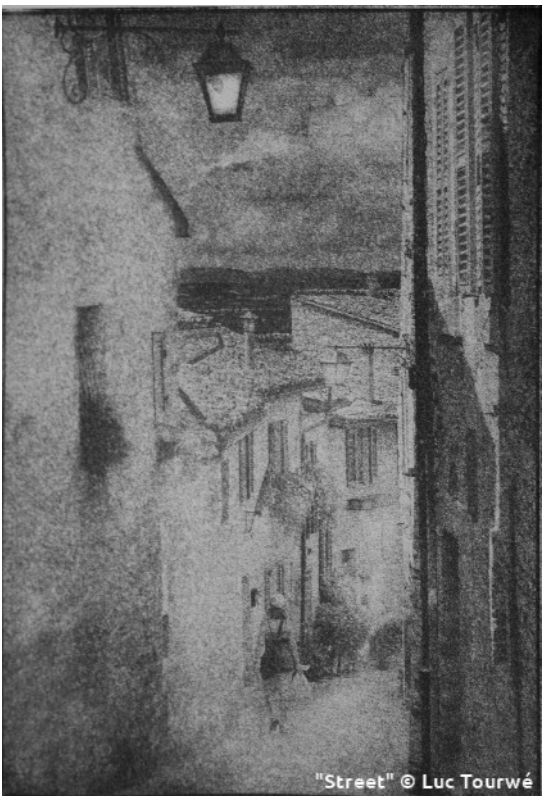
Luc Tourwé



"Door" © Luc Tourwé



"River" © Luc Tourwé



"Street" © Luc Tourwé

These are my latest tests with gumoil:

I made them all on Fabriano Artistico.

The Fabriano Artistico I ordered for this is 100% cotton, 300 gr grana fina.

It works differently than the one purchased on a roll through Picto.

The "Street" print was made on Fabriano bought from Picto, the surface is finer than with the other Fabriano I used, it feels more "velvety". Exposure had to be increased by 30%.

The two other are on Artistico, Extra White, 100% cotton cold pressed, 300g/m². This one feels rougher and its structure is somewhat more pronounced. Taken from a pad with 15 sheet 35,5 x 51 cm

Luc Tourwé – June 26 th, 2020
(translation J. Kevers)

Remarque - J. Kevers :

It is sometimes difficult to find your way around the different variants and names used by the brands. See also my document "About watercolour papers" in the private part of the website.

Fabiano exists in two colours (it's not possible to know exactly how these different colours are obtained) and in an additional surface that does not exist with other manufacturers.

So the Fabriano 100% cotton, 300gr exists in :

Traditional white

Surfaces (from the smoothest to the roughest) :

grana satinata – fina – grossa (*hot pressed – cold pressed - rough*)

Extra white

Surfaces (from the smoothest to the roughest) :

grana satinata – dolce – fina – grossa (*hot pressed – soft pressed - cold pressed - rough*)

The paper ordered through Picto and used for the "Street" print was the Extra white - dolce (surface between satinata and fina).

The paper used for the two other prints appears to be Fabriano Extra white – cold pressed.

Only the paper surface did change, and immediately it appears that the paper reacts entirely differently...